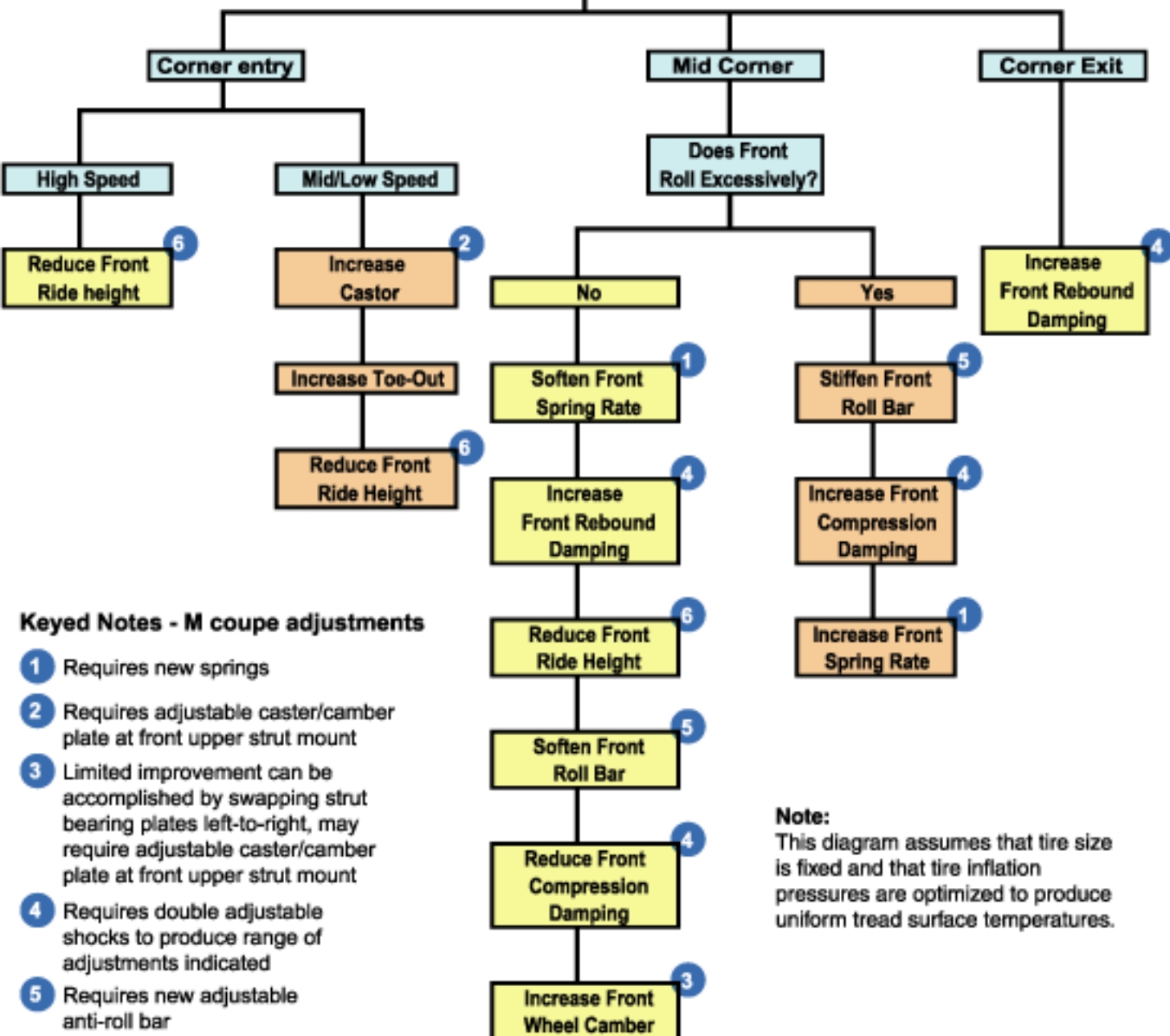


Understeer

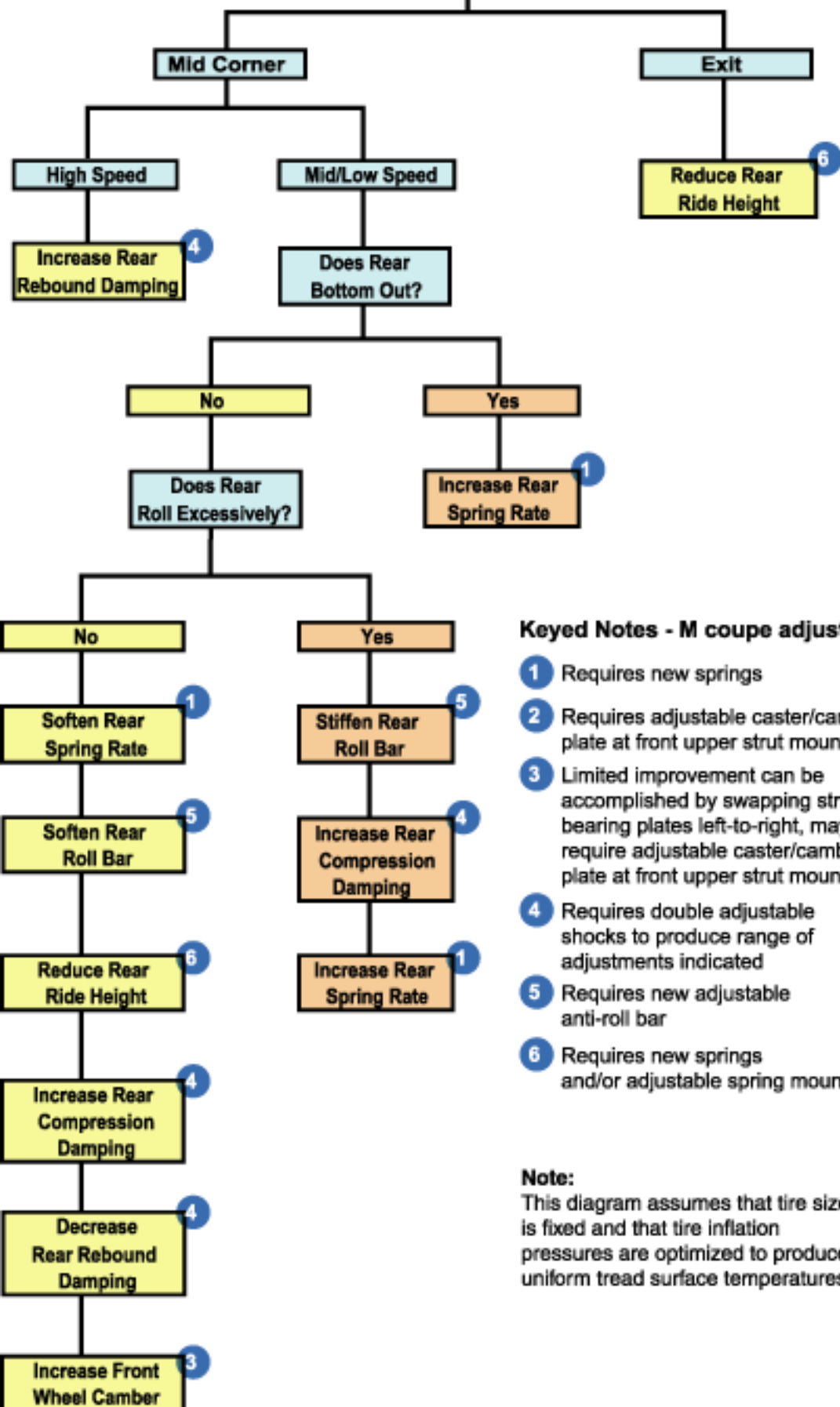


Keyed Notes - M coupe adjustments

- 1 Requires new springs
- 2 Requires adjustable caster/camber plate at front upper strut mount
- 3 Limited improvement can be accomplished by swapping strut bearing plates left-to-right, may require adjustable caster/camber plate at front upper strut mount
- 4 Requires double adjustable shocks to produce range of adjustments indicated
- 5 Requires new adjustable anti-roll bar
- 6 Requires new springs and/or adjustable spring mounts

Note:
This diagram assumes that tire size is fixed and that tire inflation pressures are optimized to produce uniform tread surface temperatures.

Oversteer



Keyed Notes - M coupe adjustments

- 1 Requires new springs
- 2 Requires adjustable caster/camber plate at front upper strut mount
- 3 Limited improvement can be accomplished by swapping strut bearing plates left-to-right, may require adjustable caster/camber plate at front upper strut mount
- 4 Requires double adjustable shocks to produce range of adjustments indicated
- 5 Requires new adjustable anti-roll bar
- 6 Requires new springs and/or adjustable spring mounts

Note:

This diagram assumes that tire size is fixed and that tire inflation pressures are optimized to produce uniform tread surface temperatures.